

## SWE60UF Small Excavator

Operating Weight: 12,723 LBS (5,770 KG)

Gross Power: 49 HP (36.5kW)

Dig Depth: 12' 2" / 3.7 m



Turn over  
for full  
specifications!

# Technical Specifications and Product Highlights

Machine Weight (Steel Tracks)		12,723 lb	5,770 kg	
Machine Weight (Rubber Tracks)		12,568 lb	5,700 kg	
Machine Dimensions	Overall Length	18' 6"	5.64 m	
	Overall Height	8' 5"	2.56 m	
	Overall Width	6' 5"	1.96 m	
	Ground Clearance	13"	330 mm	
Engine	Brand	KUBOTA		
	Model	V2607-D1-TE3B		
	Displacement	.7 Gal	2.615 L	
	Output	49 HP	36.5 kW	
	Max Speed (High/Low)	2.5 mph	4.1 kph	
	Max Cutting Height	18' 5"	5.615 m	
Working Ranges	Max Loading Height	13'	4 m	
	Max Digging Depth	12' 2"	3.7 m	
	Max Vertical Digging Depth	8' 2"	2.5 m	
	Max Digging Reach	12' 2"	6.2 m	
	Boom Swing Angle (Left/Right)	70/50		
	Front Swing Radius	8' 1"	2.3 m	
	Tail Swing Radius	3' 5"	1 m	
	Max Digging Force (Arm)	6,969 lbf	31 kN	
	Max Digging Force (Bucket)	10,566 lbf	47 kN	
	Dozer Blade Height x Width	77" x 15.7"	1.96 m x .4 m	
	Swing Speed	9.4 rpm		
	Ground Pressure	4.54 psi	31.5 kpa	
	Tracks	Track Width	15.7"	700 mm
		Track Height	1' 10"	575 mm
Track Type		Rubber Crawler		
Gradeability		35 Degrees		
Hydraulics	Brand	KYB		
	Type	2 Variable Plunger Pumps, 1 Gear		
	Total Flow	42.3 gpm	160 L/min	
	Total Pressure	10,151 psi	70 MPa	
Fuel and Hydraulics Tanks	Fuel Tank Capacity	18.5 Gal	70 L	
	Hydraulic Oil Capacity	18.5 Gal	70 L	



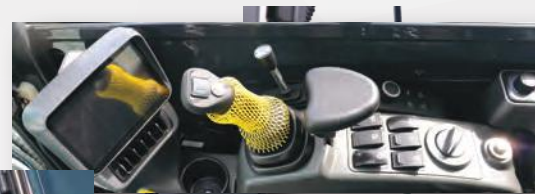
Dual-Braided hydraulic lines



Kubota Engine with easy access panels for quick engine maintenance  
Features Zero-Tail Swing



Rock Guard for protection



Enclosed cab with A/C, Touchscreen Monitor, Rock Guard and removable windows

**Sunward USA Corp**

Web: [www.sunwardusa.com](http://www.sunwardusa.com)

Address: 2710 Geesling Rd, Denton TX 76208

**Contact Info**

Phone: (469)-353-6890

Email: [info@sunwardusa.com](mailto:info@sunwardusa.com)

**Model:**

SWE60UF